

U.S. Customs and Border Protection

CARGO SECURITY STRATEGY IN THE POST 9/11 ERA



U.S. Customs and Border Protection

Our Mission

We are the guardians of our Nation's borders.
We are America's frontline.
We safeguard the American homeland at and beyond our borders.
We protect the American public against terrorists and the instruments of terror.
We steadfastly enforce the laws of the United States while fostering our nation's economic security through lawful international trade and travel.
We serve the American public with vigilance, integrity and professionalism.

BACKGROUND REGARDING "CBP" The Border Agency

- U.S. Customs and Border Protection ("CBP") is an agency of the Department of Homeland Security (DHS)
- Congress merged the four frontline agencies with border responsibilities to create CBP
- CBP was Created in March 2003
 - Customs, Immigration, Agriculture, Border Patrol
- 42,000 employees

CBP's PRIORITY MISSION

Twin Goals:

- Prevent terrorists and terrorist weapons, including WMD, from entering the United States
- Perform our priority mission without choking off the flow of legitimate trade and without disrupting the U.S. economy

Preventing the entry of terrorists and their weapons while facilitating legitimate travel and trade



CBP's strategy is layered and comprehensive.

Ensure border security against terrorists, drug smugglers, and other criminals. At 327 ports of entry, CBP performs this mission while facilitating legitimate trade and travel.



Last year, ports of entry:

- Processed 468 million incoming travelers, millions of passenger vehicles and 23.5 million commercial trucks and seagoing containers.
- Collected \$25.9 billion in duties/fees.
- Apprehended 6,700 people on drug-related charges and 7,500 wanted for crimes.
- Turned away 20,000 criminal aliens and denied admission to 643,000 aliens.
- Seized 2.2 million pounds of illegal drugs, \$242 million in merchandise, \$130 million in counterfeit goods, and 78,000 fraudulent documents.
- Intercepted 1.5 million prohibited agricultural items.

...and secure the borders in between.



Last year, CBP's Border Patrol agents:

- Arrested 1.1 million+ illegal aliens, including 644 from special-interest countries.
- Seized 1.3 million+ pounds of illegal drugs worth \$1.62 billion.
- Rescued 1,350 migrants in danger.
- From Sept.-July 2005, arrested more than 114,000 individuals with criminal records

Our role in the Port of Savannah



- Target and inspect high risk cargo, passengers and crew arriving from and departing for foreign countries (sea and air modes)
- Conduct random compliance exams on cargo, passengers and crew
- Arrest and or seize violators, contraband, and pests discovered during inspections.
- Facilitate the movement of lawful travelers and cargo in and out of our port.
- Collect Revenue and Enforce U.S. Trade Policy

What is our area of coverage?

- South Carolina Border to the Florida Border- "Georgia Coast"
- All ports, terminals, and marinas (private or public), where foreign cargo, crew, passengers and crafts arrive or depart –currently 24 ship docks, 4 airports, 14 marinas, 15 bonded warehouses, 1 FTZ + 4 subzones.
- Both Air and Sea modes of transportation-Savannah International Airport, Georgia Ports Authority, HunterAAF, etc...
- Bonded facilities –warehouses, container freight stations, FTZ & subzones, etc.

CBP'S CARGO SECURITY STRATEGY

- Developed after 9-11 in response to the threat of global terrorism
- The CSS is built on the concepts of smart and extended borders
- CSS was designed to achieve the "twin goals"

CBP'S CARGO SECURITY STRATEGY

- Built on 5 interrelated initiatives:
 1. 24 Hour Rule
 2. Container Security Initiative (CSI)
 3. National Targeting Center + Port Analytical Targeting Units
 4. "Non-Intrusive" Exam Technology
 5. Customs-Trade Partnership Against Terrorism (C-TPAT)

Layered Enforcement Approach

- 24-Hour Rule
- CSI –Container Security Initiative
- National Targeting Center (HQ)
- Local Advance Targeting Units
- Review of Electronic Manifests (PAX/Crew and Cargo)
- Non Intrusive Inspection Exams
- Physical Exams
- Release or Detain/Seize
- CTPAT –Customs Trade Partnership Against Terrorism
- Apply Risk Management

Secure Freight Initiative

- New Program
- High-Risk containers are scanned in select foreign ports.
- Image transmitted in “real time” to National Targeting Center Cargo (NTCC) in US.

24 HOUR RULE

- CBP implemented the 24-Hour Rule in 2002
- Manifest data required 24-hours before lading at foreign ports for all ocean containers bound for U.S. seaports
- CBP is implementing similar advance electronic data requirements for cargo shipped by air, truck and rail

The National Targeting Centers (NTC) and (NTCC)

- 24 X 7 tactical targeting for all transportation modes including ocean cargo
- Designed the Automated Targeting System to address the terrorist threat
- Developed and adjusts the targeting rules and algorithms for the Automated Targeting System
- Linked to Advance Targeting Units (ATU) in each seaport, including, for example, the port of Savannah

Automated Targeting System (ATS)

- Identifies “high risk” targets, i.e., all cargo shipments posing a potential terrorist risk
- A rules-based system
- ATS is based on strategic intelligence and anomaly analysis
- Integrates enforcement, terrorism, and CBP’s international trade databases
- 100% screening of all cargo shipment data
- 100% of all high risk containers are inspected on arrival at U.S. seaports or at CSI ports overseas
- ATS used to screen cargo shipped via all modes of transportation: sea, land, rail and air
- ATS is key to CBP’s antiterrorism targeting strategy

Container Security Initiative

- Core elements of CSI:
- CSI pushes security beyond our borders
 - Inspect containers identified as high-risk before they leave the foreign CSI port
 - Use imaging and radiation detection tools to inspect high-risk containers before departure for U.S. seaports
 - Physical inspection done at CSI port if anomaly detected
 - Deployment of specially trained CBP targeting teams to every foreign CSI port
 - 24-Hour rule and Automated Targeting System at CSI ports linked to NTC to identify high-risk containers.
 - Host nation Customs authorities conduct security inspection; CBP team has ability to observe security NII inspections

Container Security Initiative (A Sample of Operational CSI Ports)

<u>Asia</u>	
Hong Kong	Pusan, KR
Singapore	Tokyo, Yokohama, Nagoya, Kobe, JP
Laem Chabang, TH	Shanghai & Shenzhen, CN
Tanjung Pelepas & Port Klang, MY	
<u>Africa</u>	<u>Middle East</u>
Durban	Dubai, UAE
<u>Europe</u>	<u>Canada</u>
Alegirciras, ES	Halifax
Antwerp & Zeebrugge, BE	Montreal
Bremerhaven & Hamburg, GE	Vancouver
Felixstowe, Southampton, Liverpool, Thamesport and Tilbury, UK	
Genoa, LaSpezia, Naples, Livorno and Gioia Tauro, IT	
Gothenburg, SE	
LeHavre & Marseille, FR	
Piraeus, GR	
Rotterdam, NL	

New technologies provide critical help...



- National Targeting Center
- Non-intrusive (NII) inspection systems: X-ray and gamma imaging, radiation portal monitors, radiation detection pagers, etc.

Radiation Detection Technology

- CBP's goal: 100% radiation screening & detection – all cargo
- Principal technologies for screening radiological materials are:

Personal Radiation Detector (PRD)



Radiation Isotope Identifier Device (RIID)



Radiation Portal Monitor (RPM)



Radiation Isotope Identifier Detector



Radiation Portals



Mobile VACIS: provides "x-ray" image of container or vehicle



Re-locatable (fixed) VACIS : provides "x-ray" image



**Mobile Sea Container System (MSCS)
(true x-ray technology)**



1

**Pallet VACIS : “X-RAY” IMAGE OF
PALLETIZED CARGO OR INDIVIDUAL
CARTONS**

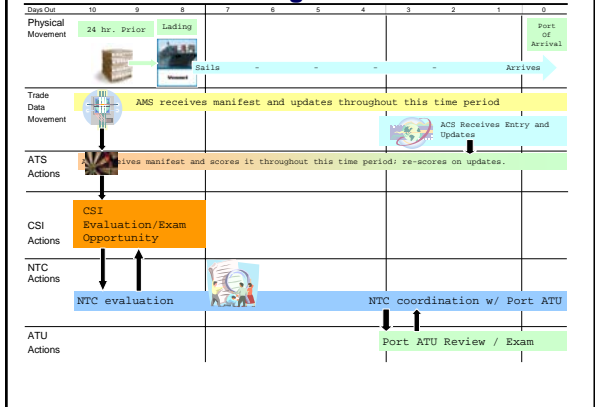


...new technology + time-tested assets.



- 1,600 canine enforcement teams—the largest federal canine workforce;
- 400 all-terrain vehicles;
- 250 aircraft;
- 175 boats; and
- 130 horses
- Savannah has 1 narcotics K9 and 1 explosives K9

Screening Process



C-TPAT

Customs - Trade Partnership Against Terrorism (C-TPAT):

- One "layer" of CBP's Cargo Security Strategy
- A partnership between the private sector and CBP
- Leverages U.S. Importers' control over foreign vendors
- Engages the Private Sector to:
 - Meet minimum supply chain security requirements
 - Secure foreign facilities/conveyances/containers used to import goods to the U.S.
 - Screen employees at foreign vendor locations
 - Establish increased security measures throughout the chain
 - Use business relationships to require increased security
- Provides benefits – reduced cargo examinations to certified C-TPAT members upon arrival.
- CBP validations of supply chain security: Trust but verify

Summary

CBP's primary mission is to prevent terrorists and terrorist weapons from entering the United States.

To meet the "Twin Goals" - enforcement and facilitation, CBP employs a risk management strategy through layers.

These layers include:

- Receiving shipment information in advance of arrival - 24 hour rule
- Pushing back the border and screening containers overseas - CSI
- Utilizing advanced targeting systems - ATS
- Clearing house for targeting and information - NTC
- Utilization of technology to effectively screen and examine cargo
- Partnership with USCG and law enforcement
- CBP officer's role in securing border
- Partnering with the trade to strengthen the supply chain - C-TPAT

...and work with many partners.



- Foreign/private sector—
 - CSI: Operational in 38 ports in 24 countries
 - C-TPAT: 9,000 industry members
 - FAST/NEXUS/AIR NEXUS
 - International trade agreements
 - World Customs Organization
 - Export Control and Border Security (EXBS)
- Public sector—
 - Immigration and Customs Enforcement
 - Department of State
 - Coast Guard
 - Federal Bureau of Investigation
 - Department of the Treasury
 - Department of Commerce
 - Department of Agriculture
 - Department of the Interior
 - State, local, and tribal law enforcement agencies

Enforcement Actions for Admissibility (Immigration) and other security risks at our Savannah terminals

- 80 Arrests – violations include illegal aliens working at bonded facilities, subjects with arrest warrants, and smuggling.
- Detained on Board- 5000 ship's crew
- Stowaways: 5 – 10 / year

Seized Merchandise and Contraband at Savannah

- Trademark Violations
- Trade Act Violations (diverted cargo to avoid tariffs and false country of origin, etc...)
- Smuggled goods
- Regulated goods without proper licenses (firearms, vehicles, FWL, etc...)
- Narcotics and Currency

Pests intercepts

- Total = 147
- 99 Intercepts of Pests
- and 48 Intercepts of Plant types
- In 2005 an intercept of the Kaphra Beetle was made. First time this pest was found in the U.S. in over 50 years.



Stowaways



Currency Bundles

1.3 million rounds of prohibited ammo

- 50 Cal. Incendiary, tracer, armor piercing
- Other military ammo
- No ATF Import License



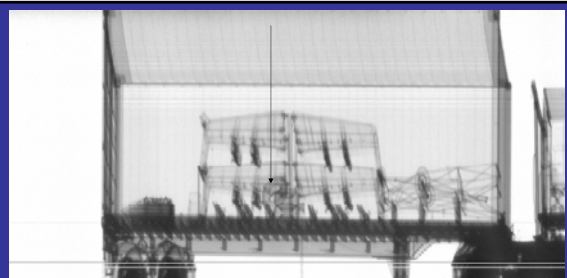
Prohibited FDA Smuggled Merchandise

- Non approved FDA medicated creams
- Non approved FDA medicated soaps
- Prohibited Skin lightening creams
- Smuggled in beans and flour



Prohibited FWL Merchandise

- Zebra skins
- Horns
- Ostrich eggs
- Furniture
- No FWL Permit at the time of importation



Helicopter Rocket Pods and Missile Rail Launchers with Firing System seized by SAV CBP



Savannah seizure 2250 pounds marijuana





QUESTIONS??

WWW.CBP.GOV

WWW.USAJOBS.OPM.GOV